



UNDERGROUND ENCLOSURE
PRODUCTS



CONNECTING COMMUNITIES. PROTECTING CRITICAL INFRASTRUCTURE.™

At **AMERICAN POLYMER COMPANY**, we believe connecting communities is essential. Connections are the heartbeat that help our communities thrive. That's why we are committed to providing best-in-class enclosure products to protect and provide access to critical infrastructure.

We leverage our extensive industry experience and innovative product solutions to offer unmatched **service**, the **performance** you know and expect, and exceptional **value** on every project, every time.

AMERICAN POLYMER COMPANY UNDERGROUND ENCLOSURES

American Polymer Company (APC) offers a variety of grade-level enclosures for many applications and industries including water utility, irrigation, telecommunications, electrical, gas, and other industrial applications. Our products offer superior performance for non-deliberate traffic installations. From polymer concrete to lightweight composites, we have the right materials and performance to serve your project.

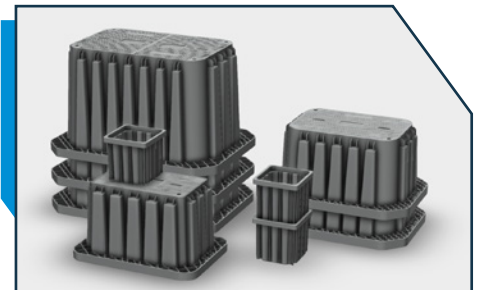
LEGACY SERIES™

Our polymer concrete enclosures are manufactured with high-quality aggregates and proprietary resin systems. Its unique, cross-linked bond provides increased strength and durability as well as improved performance during freeze/thaw cycles and chemical resistance.



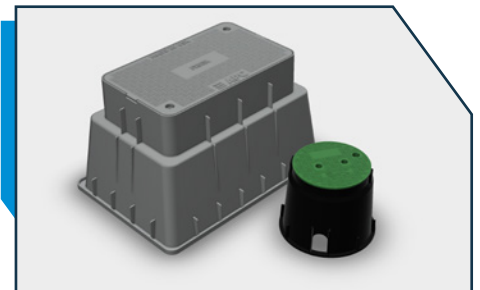
MAXIMUS™ HD

Innovating upon traditional enclosures—our new lightweight, tier-rated, nesting enclosures provide the same performance as polymer concrete delivered at half the weight. These composite enclosures allow for safer handling, improved transportation and storage efficiency.



MAXIMUS™ LD

The light duty HDPE enclosure line is a trusted solution of enclosures suited for areas where a pedestrian-rated enclosure would be best. These are perfect for applications in residential situations such as meter boxes or connecting fiber to the home.



**SCAN HERE TO VIEW OUR SELF-CERTIFIED
BABA COMPLIANT PRODUCTS**

American Polymer Company has invested in the domestic manufacturing and certifies that it is compliant with the BABA requirements for the BEAD Program as set forth by the United States Department of Commerce.



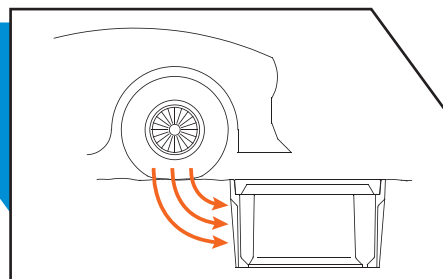
LOAD PERFORMANCE STANDARDS

American Polymer Company products meet or exceed the current test provisions listed in the ANSI/SCTE 77 2023 Specification for Underground Enclosure Integrity. These standards ensure our products perform to the integrity and safety measures for each enclosure application.

APPLICATION	LOADING REQUIREMENTS			
LIGHT DUTY Pedestrian traffic only	Vertical	Test Load	13.3 kN	3,000 pounds
TIER 5 Sidewalk applications with a safety factor for occasional non-deliberate vehicular traffic	Vertical	Design Load Test Load	22.2 kN 33.3 kN	5,000 pounds 7,500 pounds
	Lateral	Design Load Test Load	8.0 kN 12.0 kN	1,800 pounds 2,700 pounds
TIER 8 Sidewalk applications with a safety factor for non-deliberate vehicular traffic	Vertical	Design Load Test Load	35.6 kN 53.4 kN	8,000 pounds 12,000 pounds
	Lateral	Design Load Test Load	8.0 kN 12.0 kN	1,800 pounds 2,700 pounds
TIER 15 Driveway, parking lot, and off-roadway applications subject to occasional non-deliberate heavy vehicular traffic	Vertical	Design Load Test Load	66.7 kN 100.1 kN	15,000 pounds 22,500 pounds
	Lateral	Design Load Test Load	10.7 kN 16.0 kN	1,800 pounds 2,700 pounds
TIER 22 Driveway, parking lot, and off-roadway applications subject to occasional non-deliberate heavy vehicular traffic	Vertical	Design Load Test Load	100.1 kN 150.1 kN	22,500 pounds 33,750 pounds
	Lateral	Design Load Test Load	10.7 kN 16.0 kN	2,400 pounds 3,600 pounds
AASHTO H20 Deliberate vehicular traffic applications	Certified precast concrete, cast iron, or AASHTO-recognized materials.			

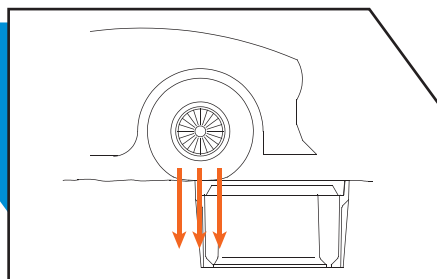
LOADING REQUIREMENTS 101

The test procedures for the loading requirements set forth by the ANSI/SCTE 77 standard are designed to simulate traffic interaction on these non-deliberate traffic enclosures. The standard outlines a three-position load test simulating the impact for tier-rated enclosures as shown below.



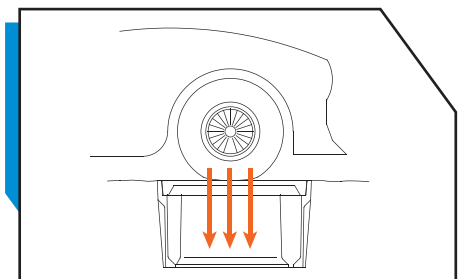
LATERAL SIDEWALL

This test simulates the vehicle's approach to the enclosure and the load impact to the sidewall integrity of the enclosure.



VERTICAL SIDEWALL

This test simulates the vehicle's approach to the enclosure and the load impact to the edge integrity of the enclosure.



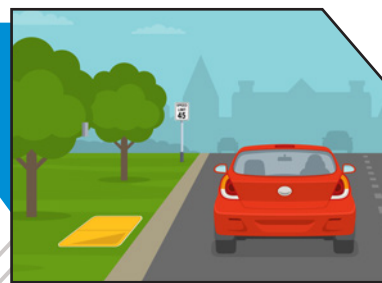
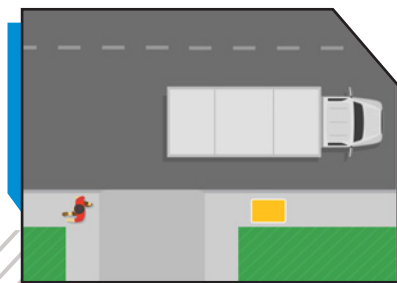
COVER VERTICAL LOAD

This test simulates the load impact to the cover and overall enclosure integrity when the vehicle is directly on top of the enclosure.

ENCLOSURE APPLICATIONS BY LOAD STANDARDS

LIGHT DUTY

These are intended for pedestrian traffic only and should be placed in grassy areas where it will not likely come in contact with vehicles. They are commonly used in residential and greenbelt areas.

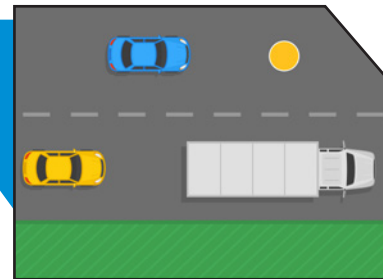


TIER-RATED ENCLOSURES

These enclosures are used in areas where they might come in contact with non-deliberate traffic such as off-roadway / right-of-way grassy areas and sidewalks. Various tier ratings are approved by local DOT offices for use in these applications.

AASHTO H20

Vaults, manholes, and enclosures that are suited for deliberate traffic are designated as H20. These products can be placed in the road, parking lot, and ally applications.



Enclosures are indicated in the overhead view as shown above in yellow with a white outline.

**INSIDE
THE BOX**



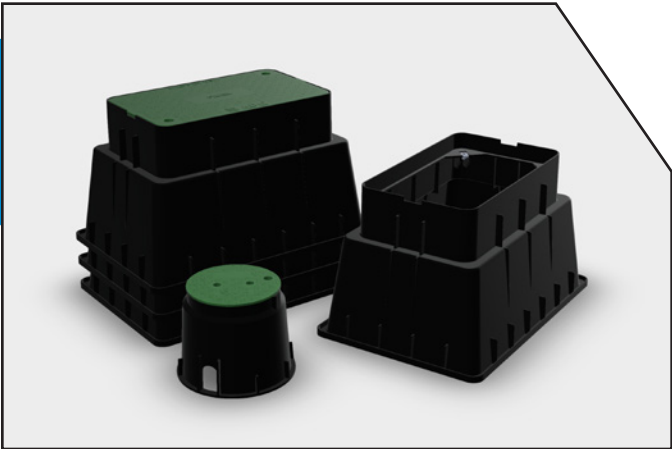
**SCAN HERE AND FOLLOW OUR NEW TECHNICAL
INSIGHT SERIES: INSIDE THE BOX**

We know that industry terms, standards, installation methods, and technical information can get confusing, so use this platform as a resource for your underground enclosure needs.



MAXIMUS™ LD

LIGHT DUTY HDPE ENCLOSURES



3,000 LBS.
**LIGHT
DUTY**

Light duty enclosures are molded with strong, high-density polyethelyne (HDPE). These are typically used in residential installations for various greenbelt applications. These enclosures provide a versatile option for many projects.

MODEL FAMILY	NOMINAL SIZE	WALL TYPE	DEPTHS	COVER	PERFORMANCE
1324	13" x 24"	Flared Wall	18"	Single	Light Duty
0910	9" Dia.	Flared Wall	10"	Single	Light Duty



American Polymer Company products meet or exceed the following standards and guidelines:

- + Build America, Buy America (BABA)
- + ANSI/SCTE 77 2023
- + Western Underground Committee Guide 3.6
- + Telcordia GR-902-CORE

LEGACY SERIES™

POLYMER CONCRETE ENCLOSURES



Polymer concrete enclosures provide superior strength and durability for many sidewalk and right-of-way applications. Their unique composition make them resilient to freeze/thaw cycles. They are also corrosion and chemically resistant.

MODEL FAMILY	NOMINAL SIZE	WALL TYPE	DEPTHS	COVER	PERFORMANCE
1118	11" x 18"	Straight Wall	12", 18"	Single	Tier 15 / Tier 22
1324	13" x 24"	Straight Wall	12", 18", 24"	Single	Tier 15 / Tier 22
1730	17" x 30"	Straight Wall	12", 18", 24", 30"	Single	Tier 15 / Tier 22
2436	24" x 36"	Straight Wall	18", 24", 30", 36"	Single	Tier 15 / Tier 22
3048	30" x 48"	Straight Wall	24", 36"	Single or 2-Piece	Tier 15 / Tier 22
3360	33" x 60"	Straight Wall	36"	2-Piece	Tier 15 / Tier 22
4860	48" x 60"	Straight Wall	48"	2-Piece	Tier 15 / Tier 22
4896	48" x 96"	Straight Wall	48"	4-Piece	Tier 15 / Tier 22
2424	24" x 24"	Straight Wall	24"	Single	Tier 15 / Tier 22
3636	36" x 36"	Straight Wall	36"	Single	Tier 15 / Tier 22
4848	48" x 48"	Straight Wall	48"	2-Piece	Tier 15 / Tier 22

Lightweight composite covers are standard on 1324, 1730, 2436, and 3048 polymer concrete enclosures. Please inquire if you require a polymer concrete cover on these sizes.



American Polymer Company products meet or exceed the following standards and guidelines:

- + Build America, Buy America (BABA)
- + ANSI/SCTE 77 2023
- + Western Underground Committee Guide 3.6
- + Telcordia GR-902-CORE

THE BOX THAT CHECKS ALL THE BOXES.™

MAXIMUS™ HD



PATENT PENDING



STRONG

A specially formulated composite blend provides unmatched strength—delivering Tier 15 and Tier 22 performance.



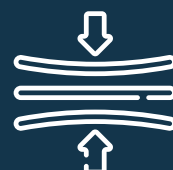
LIGHTWEIGHT

Less than half the weight of traditional polymer concrete—these enclosures provide safer handling and installation.



NESTABLE

The unique flared design allows the units to be stacked for shipment and storage—as well as provide more interior working space.



RESILIENT

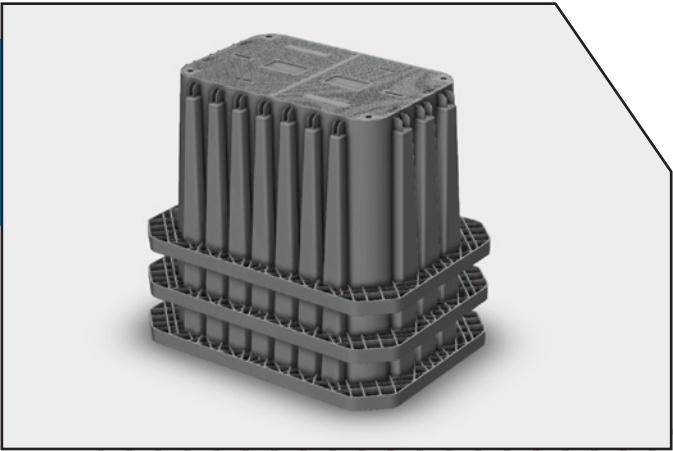
The composite blend allows this product to be resilient—resistant to chipping and cracking seen in traditional enclosures.

SHIP UP TO **160% MORE UNITS** PER TRUCK THAN STRAIGHT WALL ENCLOSURES.



MAXIMUS™ HD

HEAVY DUTY LIGHTWEIGHT COMPOSITE ENCLOSURES



22,500 LBS.

TIER
15

33,750 LBS.

TIER
22

Delivering the same strength and durability as polymer concrete, these enclosures are less than half the weight of traditional enclosures. This reduction in weight allows for safer handling and long-term, repeated use of the enclosure.

MODEL FAMILY	NOMINAL SIZE	WALL TYPE	DEPTHS	COVER	PERFORMANCE
1212	12" x 12"	Straight Wall	12", 24"	Single	Tier 15 / Tier 22
1730	17" x 30"	Flared Wall	24"	Single	Tier 15 / Tier 22
2436	24" x 36"	Flared Wall	24", 36"	Single	Tier 15 / Tier 22
3048	30" x 48"	Flared Wall	36"	2-Piece	Tier 15 / Tier 22

Orange Depth Measurement: Depth achieved when stacked with body or extension

Blue Depth Measurement: Coming Soon



ECO-CONCIOUS PRODUCT

- + MADE FROM RECYCLED CONTENT
- + REDUCED SHIPPING EMISSIONS WITH LESS TRUCKLOAD DELIVERIES PER JOB

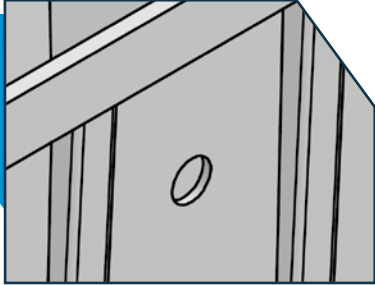


American Polymer Company products meet or exceed the following standards and guidelines:

- + Build America, Buy America (BABA)
- + ANSI/SCTE 77 2023
- + Western Underground Committee Guide 3.6
- + Telcordia GR-902-CORE

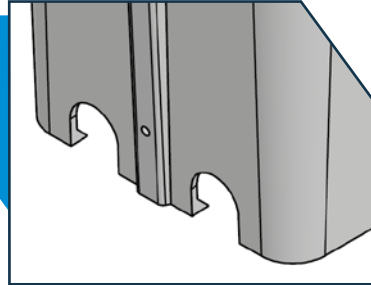
PRODUCT OPTIONS AND ACCESSORIES

A variety of options and accessories from cable racking to mouseholes are available to meet your project needs. Please reach out for additional and custom options.



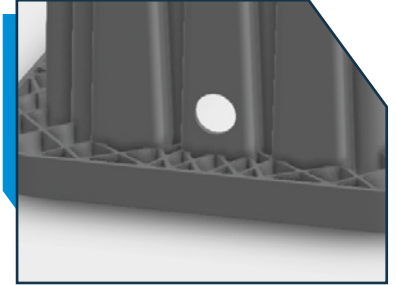
KNOCKOUTS

Knockouts are there when you need the ability to quickly add a hole to an enclosure.



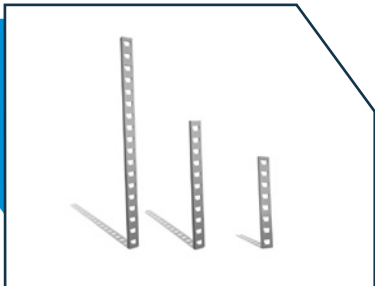
MOUSEHOLES

Mouseholes can be used to drop enclosures over pipe and conduit.



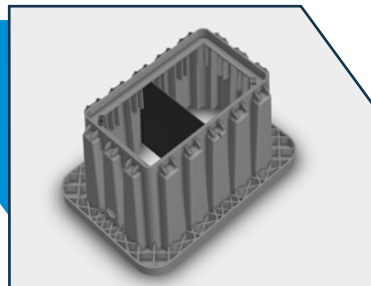
CONDUIT ENTRIES

Conduit holes are available upon request for many of our product lines to allow utilities to pass through the enclosure.



CABLE RACKING

Available in a variety of lengths, cable racking can be installed to meet your project needs.



DIVIDERS

Dividers can help split a box to accommodate two utilities within the same enclosure.



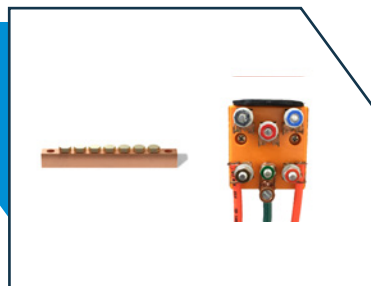
EMS LOCATORS

Locators can be sourced for a variety of utilities including telephone, power, gas and more.



SPECIALTY HARDWARE

Security bolts, pulling eyes, and other specialty hardware are available.



GROUNDING AND BONDING

Several options for bonding, grounding, including isolation switches can be added.

**CUSTOM OPTIONS
ARE AVAILABLE.
CONTACT US FOR
MORE INFORMATION.**

MARKINGS



Easily mark and identify enclosures with our unique marking plate system. Our marking plates allow for flexibility with inventory and can be permanently installed—providing peace of mind.

When it comes to marking plates, **your standard is our standard**. Custom markings and artwork are a breeze to customize your enclosure. Connect with our team for more information.

The materials and information in this document have been prepared by American Polymer Company for informational purposes only. American Polymer Company reserves the right to make changes or improvements to the products described in this document at anytime without notice. Revision Date: 03/2025



CHOOSE **AMERICAN POLYMER COMPANY** PRODUCTS FOR ALL YOUR NEEDS IN UTILITY ACCESS AND PROTECTION

AMERICAN POLYMER COMPANY offers you convenience, reliability, and technical expertise in a single source for grade-level enclosures and solutions supporting utility infrastructure and keeping communities connected.



CALL OR EMAIL FOR MORE INFORMATION

1-888-411-3048

connect@apcunderground.com



VISIT OUR WEBSITE

apcunderground.com